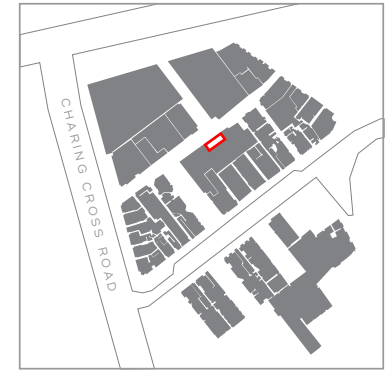
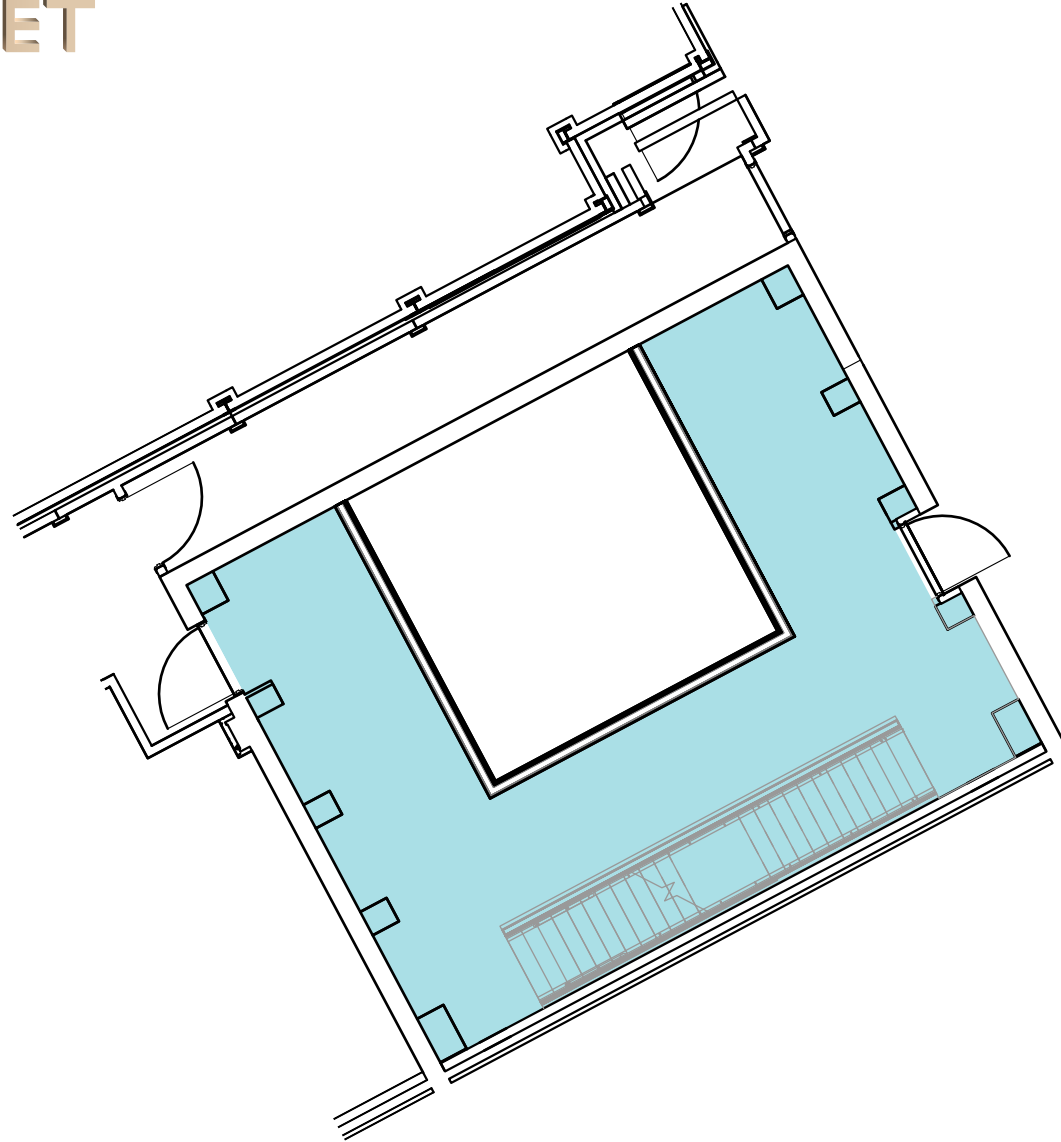


**26 Denmark Street**  
Venue Sub Basement Floor

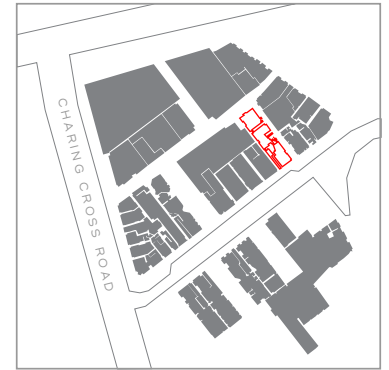
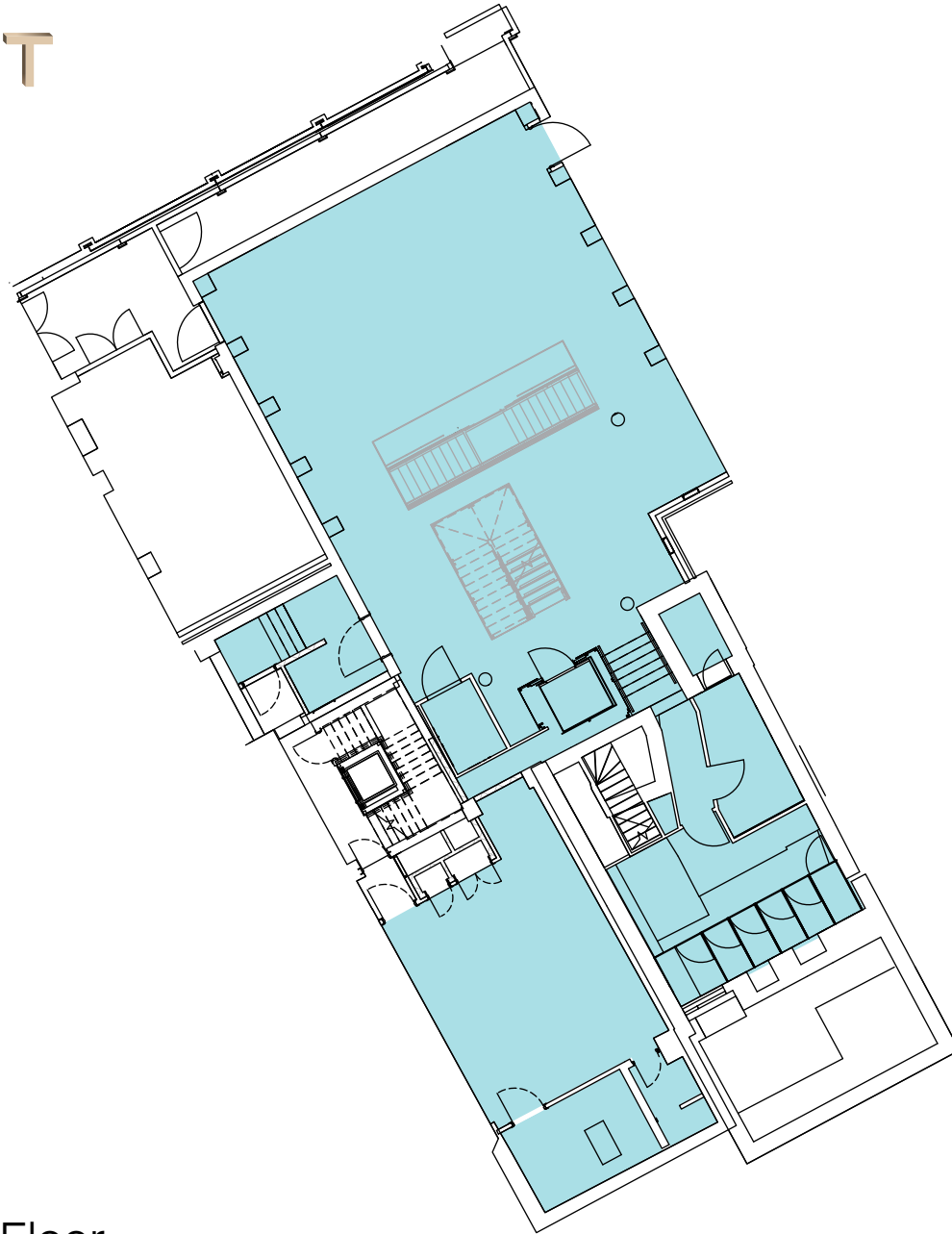
901 sq ft (84 sq m)





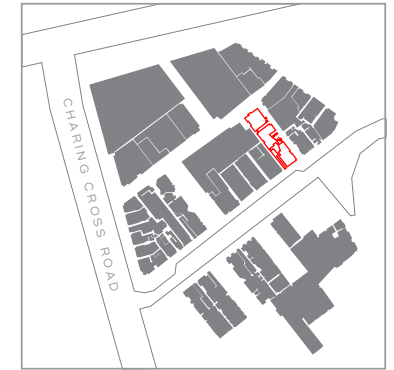
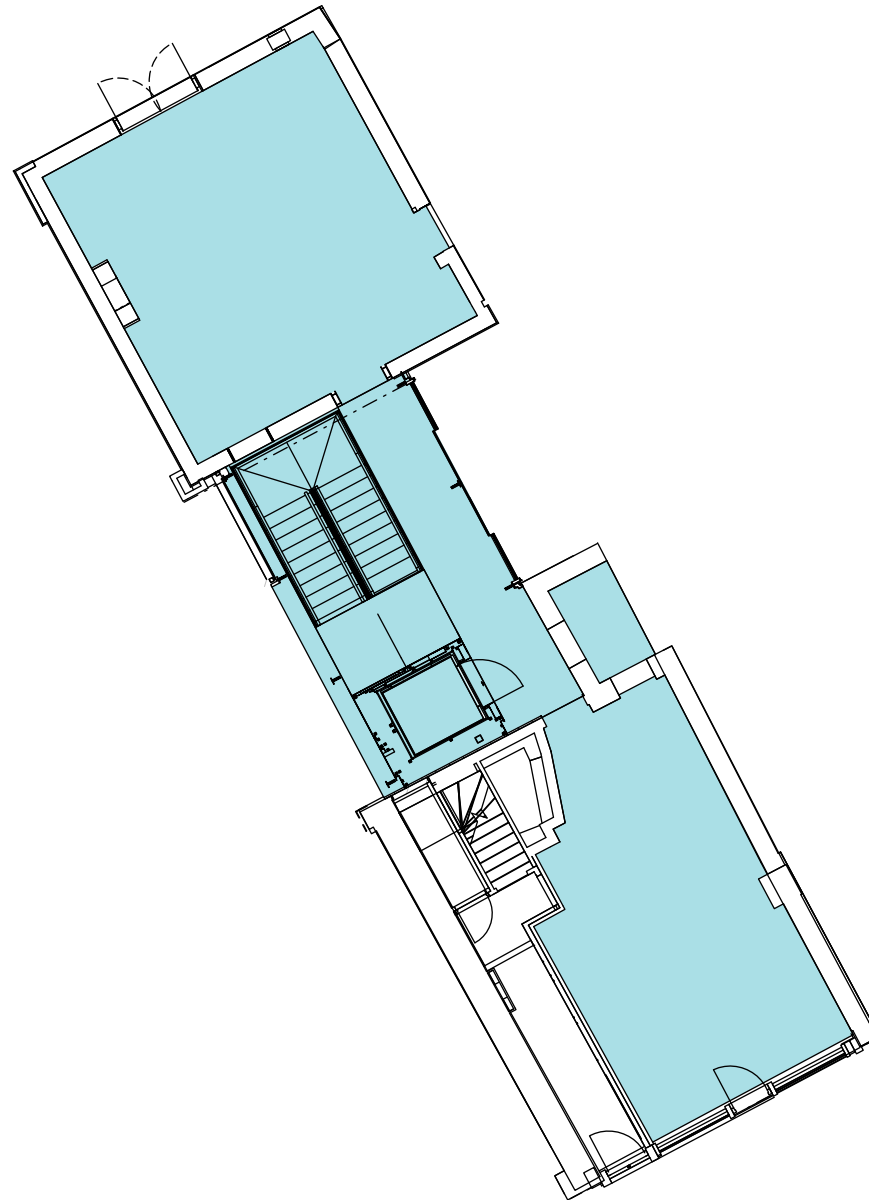
**26 Denmark Street**  
Venue Mezzanine Floor

621 sq ft (58 sq m)



**26 Denmark Street**  
Venue Lower Ground Floor

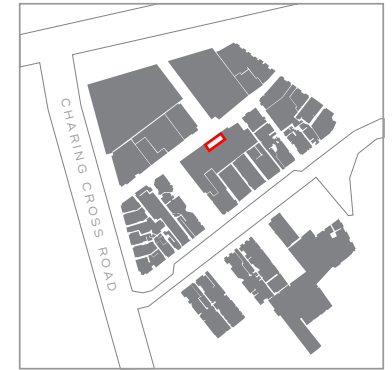
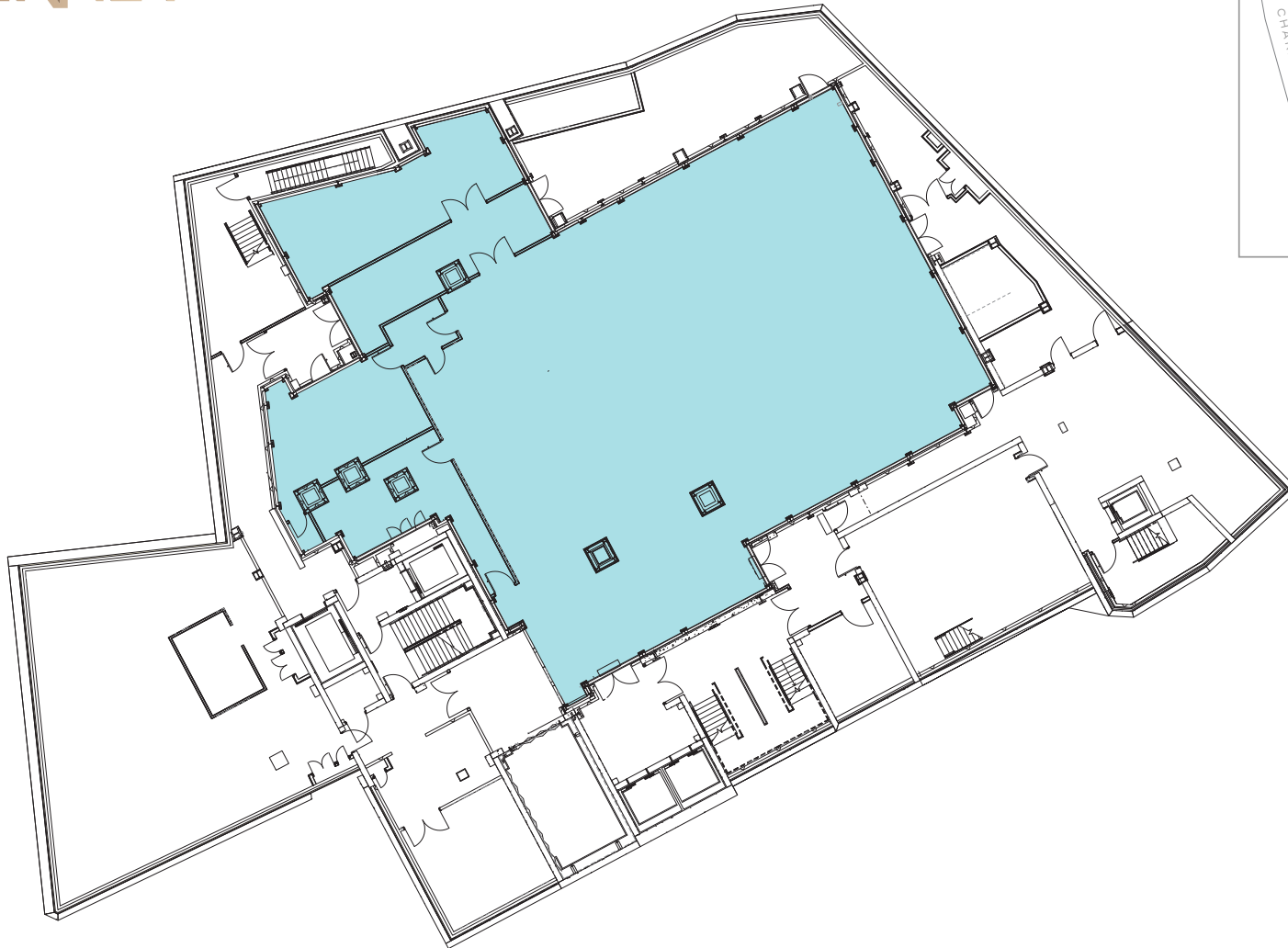
2604.8 sq ft (242 sq m)



**26 Denmark Street**  
Venue Ground Floor

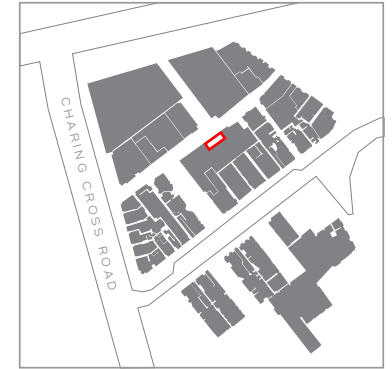
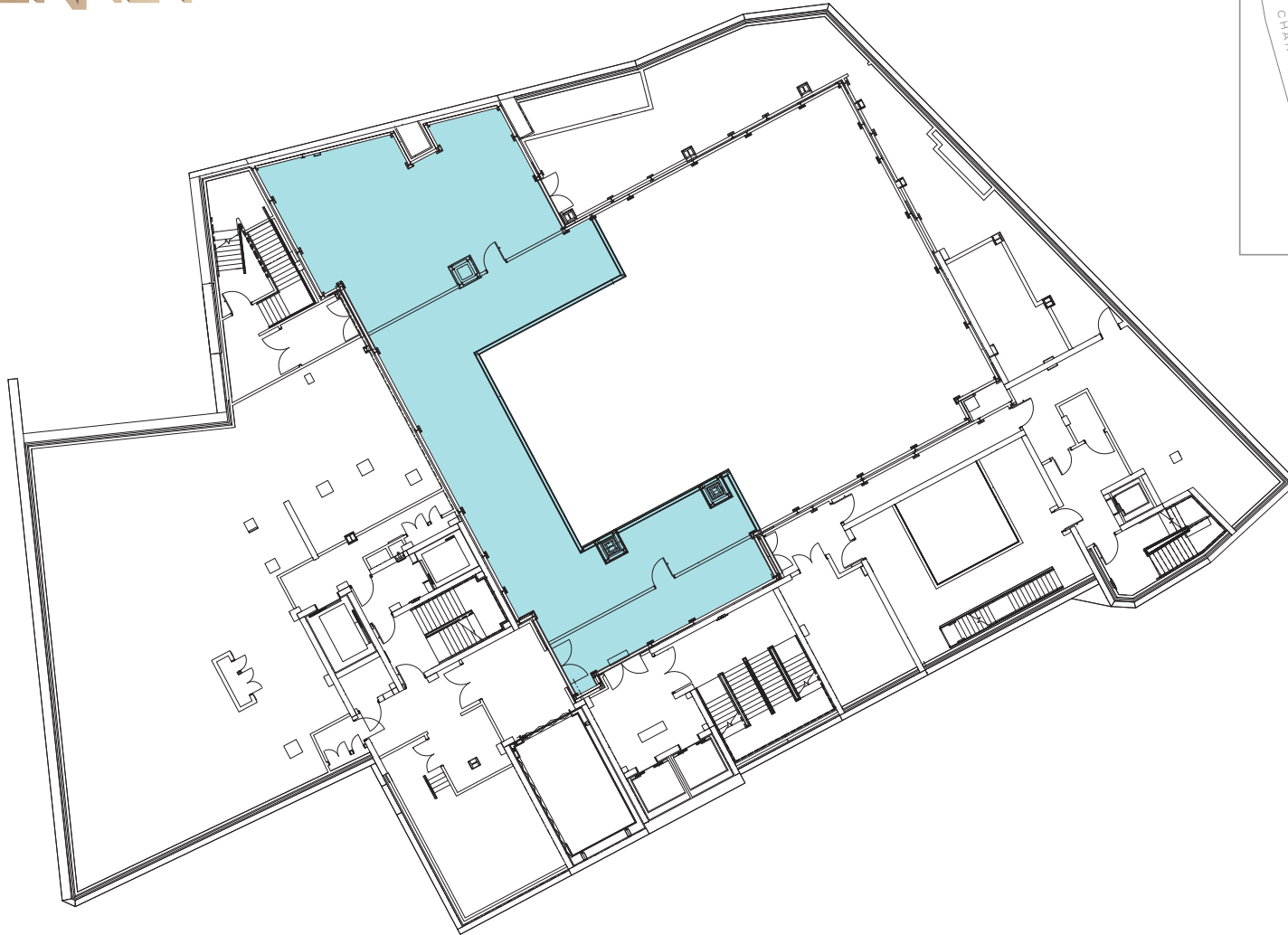
1130.2 sq ft (105 sq m)





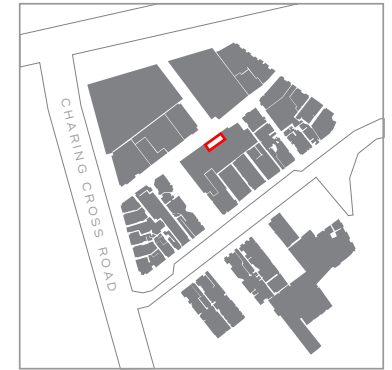
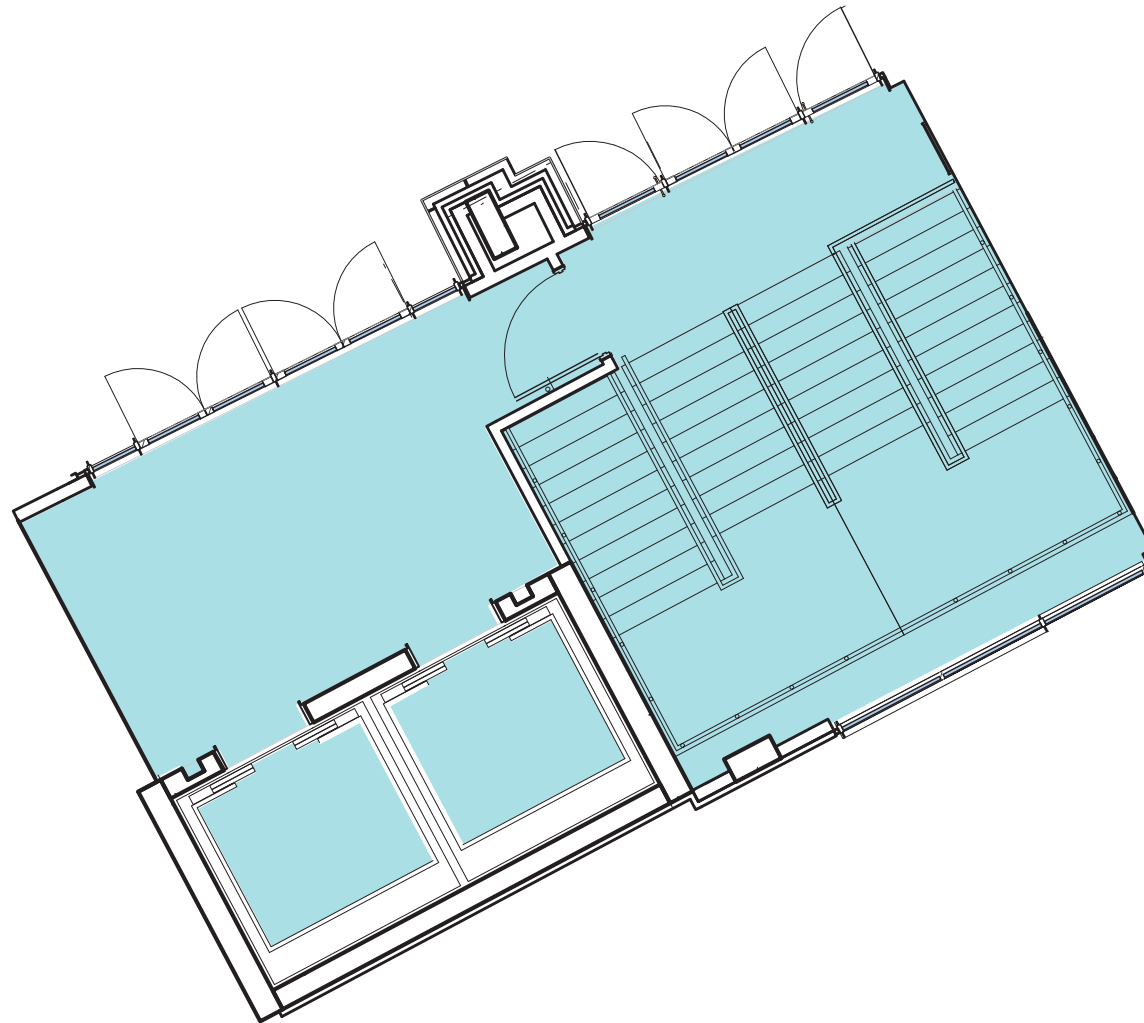
**Denmark Place Venue**  
Basement Floor

16,356.84 sq ft (1519.6 sq m)



**Denmark Place Venue**  
Mezzanine Floor

12,289.16 sq ft (1141.7 sq m)



**Denmark Place Venue**  
Ground Floor Entrance

398.2 sq ft (37 sq m)

